

Premier Keypad

PI20-Nx Installation

FEATURES

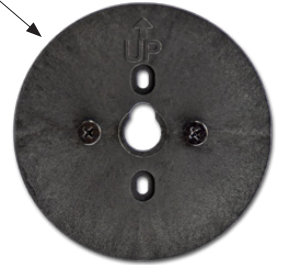
- Battery: Accessible via a sliding door at the keypad base
- Finishes: Black Velvet or Bright Chrome (ABS), Satin Chrome (metal)
- Enhanced Visibility: Built-in LED lights for use in low-light conditions



DIMENSIONS / MOUNTING INSTRUCTIONS

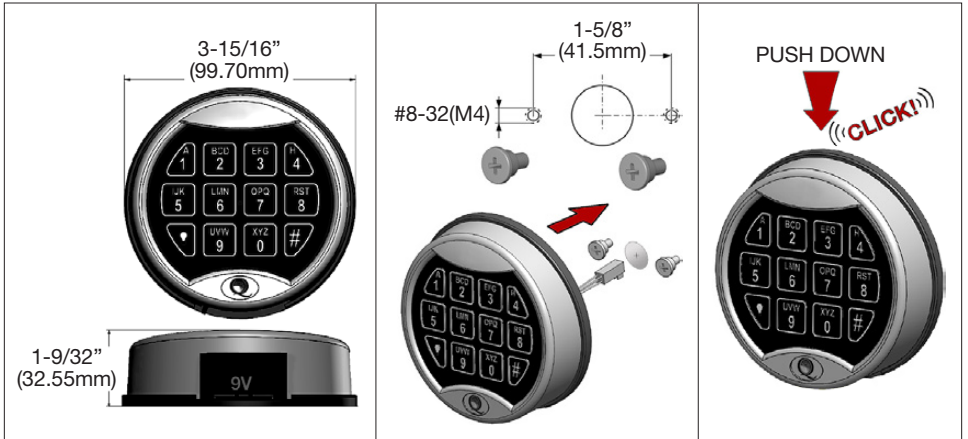
- Cable hole diameter: 3/8" (.953mm) minimum
- The hole must be properly deburred to avoid cable damage
- The PI20 mounts on horizontal (9 & 3 o'clock) studs, optional *MA2 adapter plate* required for vertical safe door mounting holes

Affix the two #8-32 (or M4) mounting studs to the safe door
 Open the battery door and extend the battery connector cable out through the door
 Feed the keypad connector cable through the spindle hole in the safe door, then slide the keypad over the #8-32 (or M4) mounting studs and push down until it snaps on with a distinct "click"



Attach 9v battery to connector
 Insert battery into keypad and slide the door closed.

Use ONLY Energizer or Duracell ALKALINE or LITHIUM batteries



PI20-Nx

- Works With:**
- EM20** Large RotoBolt
 - EM30** MotorDrive Lock
 - UR20** Universal RotoBolt



To install Premier Keypad with Rotating Adapter Kit SEE:

PI20-Rx Installation

- W024** Rotating Adapter Kit
- EM35** Straight Bolt

To view our full line of products, Warranty and other Instruction Manuals

