

EasyTouch Keypad

ET20-Dx Installation

DESCRIPTION

ET20-Dx is a multi-use keypad. With the included flat insert it may be used as a stationary keypad to control RotoBolt or MotorDrive locks. With the *included rotating knob*, it may be used to retract the bolt on our EM35 Straight Bolt lock.



FEATURES

Battery: Accessible via a sliding door at the keypad base
Finishes: Black or Bright Chrome (ABS)

DIMENSIONS / MOUNTING INSTRUCTIONS

Cable hole diameter: 3/8" (.953mm) minimum

Remove the knob from the keypad housing by depressing the knob retaining tab from the underside of the keypad housing. (fig. 1 - showing removal from reverse side).

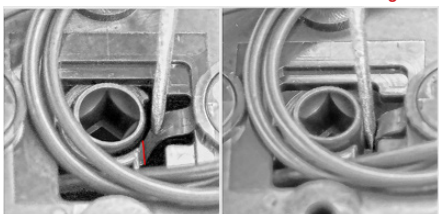
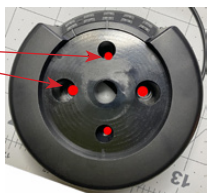


fig. 1

The ET20 mounts to either horizontal (9 & 3 o'clock) or vertical (12 & 6 o'clock) mounting holes.

Feed the keypad cable through the spindle hole from the outside of the safe door
Affix the keypad housing to the door with supplied #8-32 screws (fig. 2)



Open the battery door (fig. 3) and insert a fresh 9v battery diagonally into the battery compartment, base first and with negative (-) terminal UP.
NOTE: the positive (+) terminal will be facing out when the battery is properly installed.
Slide the battery drawer closed.
Use ONLY Energizer or Duracell ALKALINE or LITHIUM batteries

fig. 2



fig. 3

Depending on the chosen lock body, proceed with either A or B instructions below:

A.

If installing with our UR20-xx Universal RotoBolt, EM20-xx Large RotoBolt or EM30-xx MotorDrive Lock, push the flat insert into the face of the keypad and follow the applicable lock mounting, testing and code setting instructions included with each lock body.



Works With:

UR20
Universal
RotoBolt



EM20
Large
RotoBolt



EM30
MotorDrive
Lock



QSecurityProducts.com
Nicholasville, Kentucky 40356 • 859.241.2063

EasyTouch Keypad ET20-Dx Installation

B.

Works With:

**EM35
Straight
Bolt**



If installing with our EM35-xx Straight Bolt lock, discard the spindle measuring tool included with the EM35 and use the following instructions to measure and cut the spindle:

Insert the spindle into the bolt retraction knob until it bottoms out.

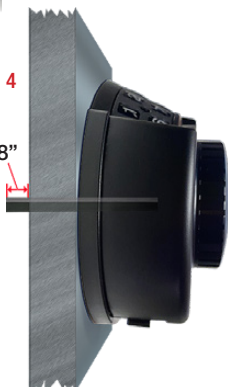


Insert the knob into the mounted keypad housing until it clicks into place.

Measure, mark, remove and cut the spindle at exactly 3/8" from the lock mounting surface. (fig. 4)

fig. 4

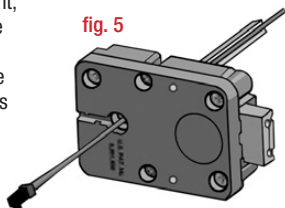
3/8"



Insert the spindle back into the keypad knob. Leaving some cable free play for knob rotation, press the keypad cable into the groove in the spindle.

With the lock body in hand, feed the keypad cable connector through the square opening on the underside of the lock case. Holding the cable straight, (fig. 5) place the lock body over the grooved spindle and screw it securely to the mounting surface. Use only the supplied 1/4-20 (or M6) screws to mount the lock. Tighten the screws securely so the lock body is firmly attached to the flat mounting surface. Use of screw locking glue (i.e. Loctite) is recommended.

fig. 5



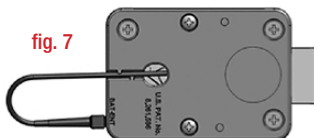
Insert the cable connector into the outer lock housing receptacle labeled ENT. Ensure that the cable is fully seated.

To remove the connector, carefully lift and pull away from the lock body.

To secure the cable, press it into the square groove on the lock cover. (fig. 7)

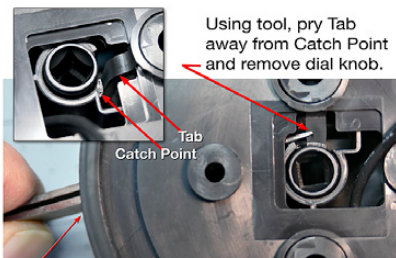
Secure any excess away from moving parts.

fig. 7



After installation, the knob may be removed using a bent tip ice pick through the battery compartment as shown.

Please refer also to (fig. 1) for a view showing removal from reverse side



Enter through Battery Door with bent tip icepick, small screwdriver or similar tool.

Proceed with Electronics Test, Functional Test and code setting found in the EM35-20 (Basic Board) Instructions, or the DIA (EM35-50) or DIA Pro (EM35-55) Technical Reference Manuals.

To view our full line of products, Warranty and other Instruction Manuals



QSecurityProducts.com

Nicholasville, Kentucky 40356 • 859.241.2063

EasyTouch ET20-Dx INSTALLATION • Rev. 2604 • © 2026 QSecurity Industries