

NL Premier Vision LOCK TE20•Nx Installation

FEATURES

Battery: Accessible via a sliding door at the keypad base
Finishes: ABS in Black or Bright Chrome, Metal in Satin Chrome
OLED Screen: Provides enhanced user feedback

DIMENSIONS / MOUNTING INSTRUCTIONS

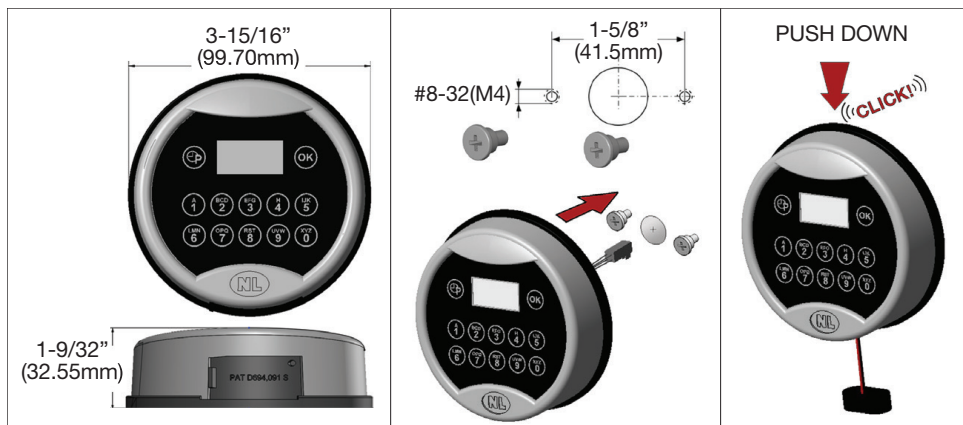
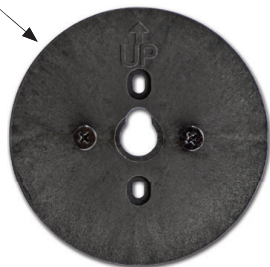
Cable hole diameter: 3/8" (.953mm) minimum
 The hole must be properly deburred to avoid cable damage
 The PI20 mounts on horizontal (9 & 3 o'clock) studs, optional *MA2 adapter plate* required for vertical safe door mounting holes

The hole must be properly deburred to avoid cable damage

Affix the two #8-32 (or M4) mounting studs to the safe door
 Open the battery door and extend the battery connector cable out through the door
 Feed the cable through the cable/spindle hole on the safe door, then slide the keypad over the #8-32 (or M4) mounting studs and push down until it snaps on with a distinct "click"

Insert battery into keypad and slide the door closed

Use ONLY Energizer or Duracell ALKALINE batteries



TE20•Nx

Works With:

EM20

Large
RotoBolt

EM30

MotorDrive
Lock

UR20

Universal
RotoBolt



For updates and
additional information



SECURITY
PRODUCTS™

QSecurityProducts.com • 1014 S. Main Street • Nicholasville, Kentucky 40356 • 859.241.2063

Premier Vision TE20•Nx INSTALLATION • Rev. 2504 • © 2025 QSecurity Industries